

# USER MANUAL

## TOPPER MOWER

### ATTENTION



**3 Point Topper Mower may present dangers during its use.  
Read the user manual attentively before its use.**



Thank you for having bought 3 point finishing mower

Please follow our recommendations to be fully satisfied with this purchase.

In this manual you will find all the information of use and security.

It is important to follow the instructions for the regular operation of the apparatus and the safety of the operator.

Please read attentively and carefully all the operations and the caution concerning the security described in this manual before the startup of the machine.

We declines all responsibility for damage caused by the non-reading of the instructions given in this manual or for any use not in accordance with the destination of the machine or lack of maintenance.

All these machines are equipped with an identification plate where you will find the data which are essential to order spare parts.

The models may be different for some details.

Each machine is equipped with an identification plate where you will find all the data which are fundamental to verify the accounting between the machine and the tractor and for all order of spare parts.

3 point finishing mower is designed for maintenance and the cutting of the grass.

Labels of safety and plate of identification

**ATTENTION**

LIRE ATTENTIVEMENT LE MANUEL DE L'OPÉRATEUR AVANT LA MISE EN SERVICE DE L'APPAREIL.

AVANT CHAQUE UTILISATION :

- Contrôlez le serrage des boulons du boîtier et du système de coupe
- Vérifiez le niveau d'huile du boîtier ainsi que le graissage de la transmission
- Assurez-vous que tous les protecteurs soient bien en place.

**"POUR VOTRE SÉCURITÉ"**

Read instruction manual before use or maintenance.



Stop the tractor engine and remove the key before working on the machine.



Risk of being caught by the transmission. Do not approach the machine and avoid wearing loose clothes which could become entangled in moving parts.



PTO Speed max. : 540 tr/min MAX



Risk of projections. To be held apart from the operating range of the machine. Make sure that all the guards are in their place during the use.



Danger of cutting. To be held apart from the operating range of the machine. Make sure that all the guards are in their place during the use.

Manufacturer's identification license :

<b>CE</b>	
<b>TYPE:</b>	<b>YEAR:</b>
SERIAL No.	WEIGHT (Kg)

It is strictly prohibited to remove protections of safety, labels of safety and the plate of identification manufacturer.



## ATTENTION

“FOR YOUR SECURITY”

Read carefully the user manual before use

Thanks for your trust

You will find all information about use and security in this manual.

It's very important to follow the instructions of manual for the operation of the equipment and the security of the operator.

The topper mower with horizontal axle is designed for the maintain working and cleaning the grass.

- The power of the tractor should not be higher than the gear box.
- It is composed of a chassis:
- A gear box in accordance with CE standards
- A protector approved by CE
- A system of variable cutting height in compliance with the needs of work

Rotor 2 or 3 blades ventilated steel treated depending on the model

- A rear protecting plate
- A front protection
- Two plates with adjustable height
- A portable hitch
- A transmission conforms to CE standards and it also has a suitable safe dimension, the power is in according to the needs of work

The topper mower is delivered with safe bolts or clutch

- Protective cover on the gear box
- Front protection
- AR Anti-splashing plate

Option - the transmission bolt or clutch and the free wheel

It is strictly forbidden to operate the equipment without any of these protection devices.

## SPECIFICATIONS

Model	Cutting width	Power required Gear box 540r/min	Security Cardan	Blades system	Linkage	weight
TM 100	100cm	20HP	bolt	2 or 3 blades	Standard	120kg
TM 120	120cm	30HP	bolt	2 or 3 blades	Standard	160kg
TM 140	140cm	30HP	bolt	2 or 3 blades	Standard	200kg

## TOPPER MOWER LINKAGE INSTALLATION SERIES 100-120-140

### SECURITY LABELS

- 1.Read user manual before use or maintenance.
- 2.Rotational parts is dangerous for the hands.Please stop the rotor device before use
- 3.The splashing of stones, woods...etc. Stay away from the working field of machine. Ensure that all

protectors are their position during use

4. Danger of be caught by transmission. Don't approach to the machine, avoid wearing the large clothes which may hook the parts of machines which are moving.

## DANGER

⇒ User

He can operate the machine on the conditions as follows:

- Good eyesight and good hearing
- Read and study the user manual
- Be attentive to his security and others' security
- Well known the use and maintenance of the machine
- It's strictly forbidden to drink alcohol, ingest drugs and other substances that might affect the use of the machine



## SECURITY

The Topper mower conforms to the norms of European security.

If the tractor hasn't the protective seat device, during the work we suggest putting a grille behind the operator, or wear a safety helmet.

### Observe the rules and norms of the security in order to prevent some accidents

- A unprofessional person use the machine, maybe cause some damages for himself and for others
- Before operate the machine, stop the engine of the tractor until that the rotor stop completely, then cut off the PTO Shaft
- Before operate the machine, ensure that all protectors are their position.
- Replace the protectors if they are damaged
- Always remove the PTO Shaft on the road
- During the parking, stop the engine and put the machine on the ground, remove the PTO shaft

⇒ **IT'S FORBIDDEN**

To work on the terrains with tough slope, especially on the place with many stones.

To work in the conditions with insufficient visibility

To work without any protector

To modify the machine without the authorization from manufacturer

To lift the machine with the movable PTO shaft

To climb on the machine during work or transportation

To approach the rotational machines during work.

To work behind the houses or the road without keeping security distance

To get off from tractor when the machine is moving

All use of the machine and the cleaning weed work are relative to the security of the user and the machine.

**We refuse all responsibilities for any damage which not conforms to the rules of the security , use and maintain.**

⇒ **CLOTHES OF WORK**

**During cleaning the weeds, the maintain or the repair of the machine, always wear the suitable clothes in order to prevent some accidents.:**

WORKING GLOVES

SAFE SHOES

PROTECTIVE HELMET

**Avoid clothes too large**

## ⇒ OPERATION

Read the user manual of the tractor before the hitch of machine

Connect the machine to the tractor on the flat place, stop the engine and tighten the brake.

The Topper mower can be connected to all types tractors with a 3 point linkage and its power required corresponds to the power of gear box

Before use, some operations are necessary.

After having connected the machine to 3 point tractor:

- Connect the transmission( security near by machine)

Check the length and if necessary, shorten it. Read the instructions of the manufacturer.

- Adjust the security of the transmission

- 2 anti-rotation chains of the transmission are connected, one on the bonnet of the machine, another on the tractor.

- Check the oil level of the gear box(oil 85×140EP)

- Check the PTO rotation speed which is compatible with the speed of gear box 540T/MM max

- Check the tightness of bolts of the gear box and blade system before use.

In the case of serious vibration, stop the machine and call a technician.

## MAINTAIN

Disassembled transmission, machine unconnected to tractor

After 5 hours use:

- Check the tightness of the bolts on the whole machine

- Check the oil level of the gear box.

It's recommended to check:

- The oil level of gear box( empty it after the first 40 hours work then all of 250 hours, empty it by absorption)

- The adjustment and security of the transmission

- The tightness of the bolts of the blades system, gear box, base-plates

- Immediately replace the damaged blades(broken-folded)(fixed bolts to use resistance 10.9) in order to fix the blades

- The blades system, take out it from some clogged materials, maybe cause the unbalance of the tractor rotor

- The sharpening of the blades

- The lubrication of the transmission

**The repairs and operations of the maintain should be carried out by a professional person.**

At the end of the season or in the case of non-use for long time. It's proposed to:

- 1-Put the transmission on the connected support in order to avoid the dirtiness accumulations, deformation or damage of the protectors.

- 2-Clean carefully the machine

3-Check and replace the damaged pieces

4-Lubricate all the parts by oil or any other anti-rust products

5-Cover the machine with tarpaulin or put it if possible on the dry place.

**Observing these proposals will help you have a perfect machine for the next time use.**

PROBLEMES	REASONS	SOLUTIONS
Wearor damage of the transmissions	Incorrect installation	1-Check that all the chains are fixed and allow the articulation of the transmission
Vibration and excessive noise	Loose bolts, Broken blades, too long or badlymountedtransmission, rotor is blocked of dirtiness or rust.	1-Check that the protectors don't touch the parties of the tractor or the machine during the work. 2-Check the condition of the rotor and blades and replace the damaged parts. 3-Check the length of the transmission and refer to its user manual. 4-Check the rotation's speed of the PTO shaft, which should be correspond to the speed of machine's gear box (540T/MM max)
Inefficient work	<ul style="list-style-type: none"> <li>● Abrasion of the blades</li> <li>● too lowspeed of rotation , or too rapid advancement.Safety of the damaged transmission friction</li> </ul>	1-Check the abrasion of the blades 2-Reduce the speed of the tractor. 3-Check the rotation's speed of the PTO shaft, which should be correspond to the speed of machine's gear box 4-Check the manual of the transmission or call a technician
Sudden stop of the rotor	Loose friction, broken Bolt	1-Checks the notice of the transmission or contact a technician.

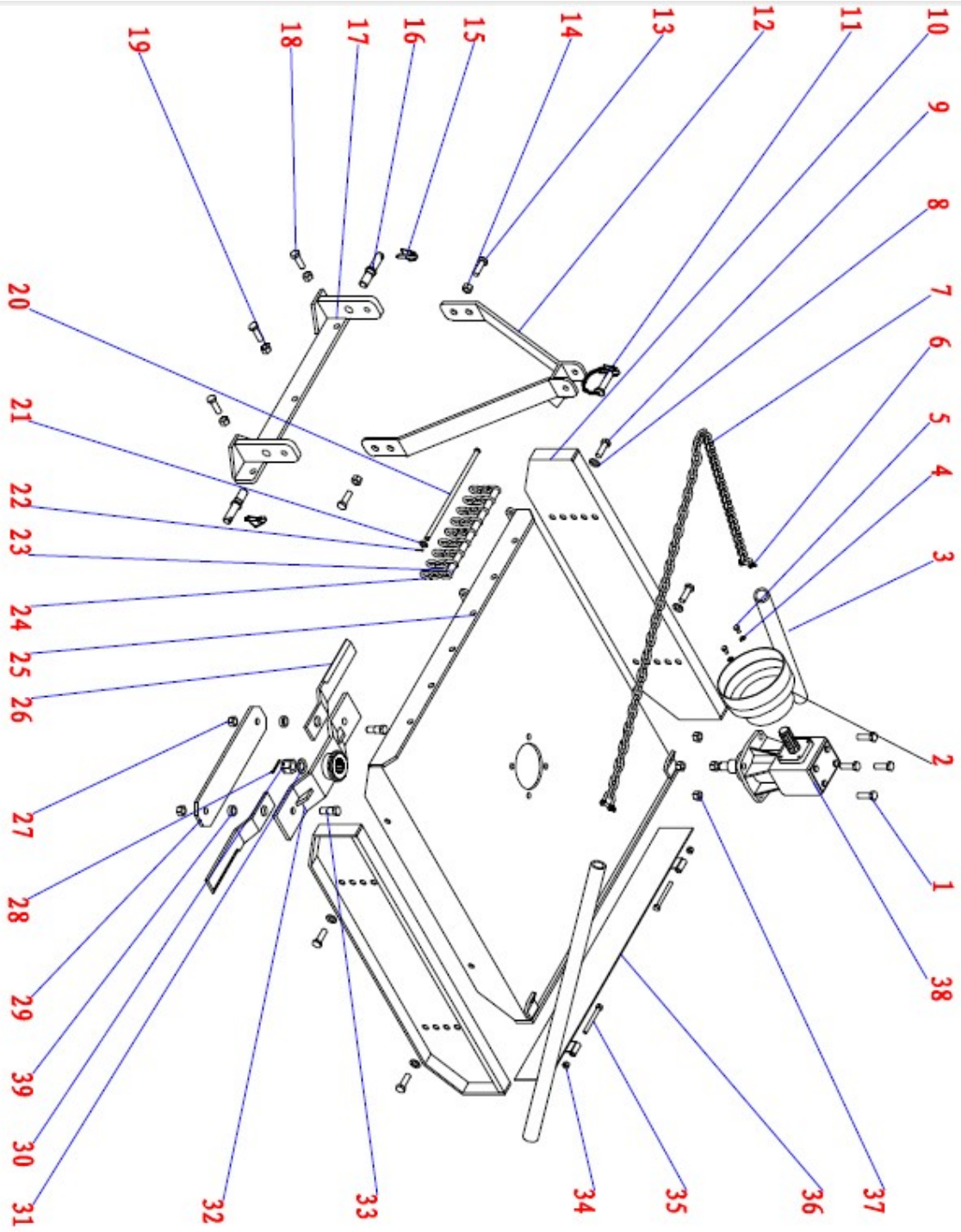
## 1. Square Mower Assembly

(TM100-140)

Ser.No	Item No.	Name	Qty.
1	GB/T5782(M16X50)	Bolts M16X50	4
2	EF105-00-103	Shield protective cover	1
3	TM100-00-015	Shield sleeve	2
4	GB/T95(8)	Plain washer 8	2
5	GB/T5782(M8X16)	Bolts M8X16	2
6	JB8112(M10)	Lock M10	2
7	JB/T8108.2	Chain	1
8	GB/T95(16)	Plain washer 16	4
9	GB/T5782(M16X45)	Bolts M16X45	4
10	TM100-00-014	Anti-friction plate	2
11	EF105-00-015	Sup. suspension pin	1
12	TM100-00-016	Suspension plate	1
13	GB/T5782(M16X50)	Bolts 16X50	2
14	GB/T6182(M16)	Locknuts M16	2
15	EF105-00-116	Spring lock pin	2
16	TM100-00-106	Inf. suspension pin	2
17	TM100-00-017	Support for suspension plate	1
18	GB/T5782(M16X50)	Bolts M16X50	3
19	GB/T6182(M16)	Locknuts M16	3
20	TM100-00-102	Chain pin	1
21	GB/T95(12)	Plain washer 12	1
22	GB/T91(3.2X24)	Open pin 3.2X24	1
23	TM100-00-104	Spacer	8
24	TM100-00-103	Chain	9
25	TM100-01-001	Main welding assembly	1
26	TM100-02-101	Blades	2
27	GB/T6182(M18X2.5)	Locknuts M18X2.5	2
28	GB/T91(5X45)	Open pin 5X45	1
29	TM100-02-102	Inf. knife rest	1
30	GB6178(M24X2)	Notch nuts M24X2	1
31	GB/T95(24)	Plain washer 24	1
32	TM100-02-011	Sup. knife rest	1
33	TM100-02-103	Pin	2

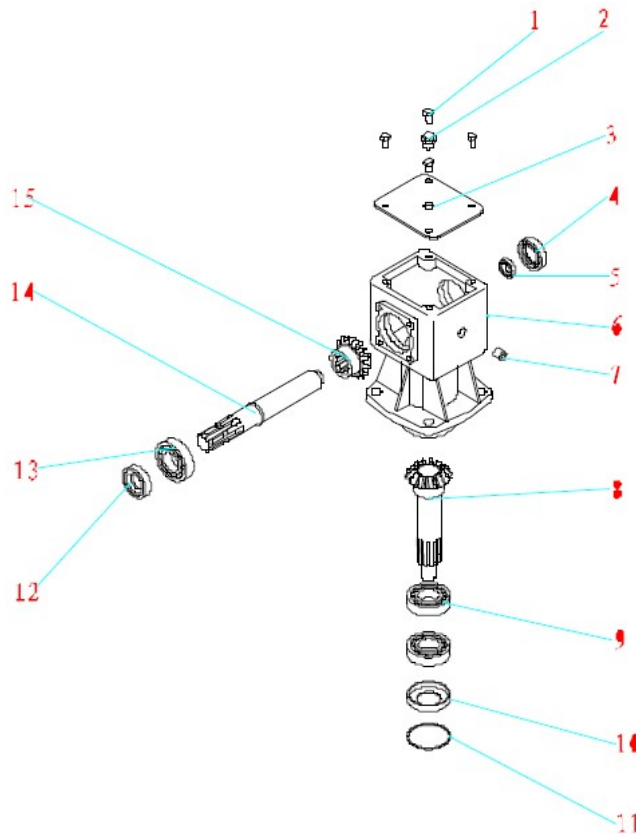


34	GB/T6182(M10)	Locknuts M10	2
35	GB/T5782(M10X100)	Bolts M10X100	2
36	TM100-00-013	Tail plate	1
37	GB/T6182(M16)	Locknuts M16	4
38	TM100-02-012	Gearbox Assembly	1
39	TM100-02-107	Blade spacer	2



## 2. Gearbox Assembly

Ser.No	Item No.	Name	Qty.
1	GB/T5782	Bolts	4
2	RT105-00-114	Oil plug	1
3	TM100-WG-101	Upper cover board	1
4	TM100-WG-102	cover board	1
5	GB/T276	Bearing	1
6	TM100-WG-103	Gear case	1
7	GB77	Bolts	1
8	TM100-WG-104	Gear shaft	1
9	GB/T276	Bearing	2
10	GB13871	Oil seal	1
11	Circlip	1	
12	GB13871	Oil seal	1
13	GB/T276	Bearing	1
14	TM100-WG-106	Input shaft	1
15	TM100-WG-107	Initiative gear	1



## TM100-02

Ser. No.	Item No.	Size	Qty.
1	TM100-02-011		1
2	TM100-02-104	Steel thickness 10mm	6
3	TM100-02-107	seamless steel tube $\phi 30 \times 4.5$	6
4	TM100-02-101	Steel thickness 11mm	3
5	TM100-02-103		6
6	GB/T 6170-2000	M18	6
7	GB/T 9459-1988	M24 $\times$ 2	1
8	GB/T 97.1-2002	24 $\times$ 4	1
9	GB/T 91-2000	5 $\times$ 45	1
10	TM100-02-012	XH30-192Z01	1

