



TWO POST LIFT

USER'S MANUAL

USER'S MANUAL

**KEEP THE MANUAL NEAR THE MACHINE ALL TIME
AND MAKE SURE ALL USERS HAVE READ THIS**

Two Post Lift

***Manufacturer keeps the rights to improve the contents in this manual.**

Safety

□ Introduction

Thoroughly read this manual before operating the lift and comply with the instructions. Always display the manual in a conspicuous location.

Personal injury and property damage incurred due to non-compliance with these safety instructions are not covered by the product liability regulations.

□ Symbols



Failure to comply with instructions could result in personal injury.



Failure to comply with instructions could result in property damage.



Important information

Safety Instructions for Operation

- ⑩ Read the operating manual.
- ⑩ Lift operation by authorized personnel over 18 years only.
- ⑩ Always keep the lift and lift area clean and free of tools, parts, debris etc.
- ⑩ Once the disk adapters contact the lift points, check arm restraints for engagement.
- ⑩ After raising the vehicle briefly, stop and check the disk adapters for secure contact.
- ⑩ Always lift the vehicle using all four adapters.
- ⑩ Make sure the vehicle doors are closed during raising and lowering cycles.
- ⑩ Closely watch the vehicle and the lift during raising and lowering cycles.
- ⑩ Do not allow anyone to stay in lift area during raising and lowering cycles.
- ⑩ Do not allow anyone on lift or inside raised vehicle.
- ⑩ Only use the lift for its intended purpose.
- ⑩ Comply with the applicable accident prevention regulations.
- ⑩ Do not overload the lift. The rated load capacity is indicated on the lift nameplate.
- ⑩ Only use the vehicle manufacturer's recommended lift points.
- ⑩ After positioning the vehicle apply the parking brake.
- ⑩ Use caution when removing or installing heavy components (center-of-gravity displacement).
- ⑩ The main switch serves as emergency switch. In case of emergency turn to position 0.
- ⑩ Protect all parts of the electrical equipment from humidity and moisture.
- ⑩ Protect the lift against unauthorized usage by padlocking the main switch.

FRIENDLY ATTENTION SAFETY FIRST!

1. Please check lift before work. If the lift is not balanceable, please adjust the lift and check the safe chain.
2. You must enhance the lift above the safe chain, and then begin your work.
3. Please check the parts of transmission and slippage frequently. Please infuse the oiling on the chain between the axles every 5 to 7 days
4. Work please refers to the instruction and safe guide picture.
5. Please change the oil upon the season (summer 46# / winter 32#)

TABLE OF CONTENTS

1 INTRODUCTION	7
2 GENERAL SAFETY RULES	8
3 OVERALL DIAGRAM	9
4 TRANSPORTATION	10
5 UNPACKING	11
6 INSTALLATION	12-15
7 INSTRUCTIONS FOR USE	15
8 MAINTENANCE	15
9 BREAKDOWN VIEW	16-17
10 ELECTRICAL DRAWING	18-19
11 HYDRAULIC DRAWING	19
12 TROUBLESHOOTING	20

INTRODUCTION

Thank you for your purchase of this hydraulic two post.

This guide has been made in order to supply the owner as well the user with the basic instructions for a correct use of the machine

Read this guide carefully before using the machine and follow the instructions given by this guide carefully to grant the machine a correct function, efficiency and a long service life.

INTENDED USE:

The 2-post lift is suitable for lifting motor vehicles having maximum weight as described below:

It is forbidden to lift people or others not specified in this manual. Any other use is to be considered improper and irrational and thus highly forbidden. The constructor cannot be held responsibilities for any damage or injuries caused by an improper use or by the non-observance of the following instructions:

Do NOT install the lift in windy sites or potentially explosive room.

The lift, in its standard version, is not intended for outdoor use, in this case, it is necessary to ask the constructor for a special version.

For any installation to be made in a site different from what specified, ask the constructor's advice.

TECHNICAL DATA:

Lifting height	1800mm/1900mm
Lifting capacity	3500KG/4000KG/4500KG/5000KG/6300KG
Lifting time	45-55s
Lowering time	40-50s
Power	2.2KW / 3.0KW
Voltage	220V/240V-1PH 220V/240V-3PH 380V-3PH 50HZ

Refer to the voltage on nameplate before connecting with power source.

GENERAL SAFETY RULES

a. **Checking voltage:**

Check the voltage, phase and frequency requirements showing on motor plate, wiring must be done by certified electrician only.

b. **Lift installation:**

Follow the directions given by law in force in the country where installed. Also take into consideration the advice given by manufacture of such products. The lift, in its standard version, is not intended for outdoor use, in this case, it is necessary to ask the constructor for a special version.

c. **Using lift:**

The lift may only be used by qualified staff, properly trained for the specific use of the machine.

Do not wear unfit clothes such as large clothes with flounces, tires, etc; which could get caught by moving parts of the machine.

d. **Clear the surroundings:**

The lift surrounding area must be free from people or objects which could be a danger for lifting operations.

e. **During Operation:**

Make sure that the machine and its devices are working correctly, according to the specific instructions for maintenance.

The vehicle must be centered and positioned in a stable correct way with respect to the posts and following the instructions given by manufacturer.

When the vehicle has reached the desired position, engage the mechanical safety racks.

f. **After use:**

Lower the lift to its lowest position when service finish.

Do not modify the machine without manufacturer's advice.

If the machine is not to be used any more, owners are suggested to make it unusable by removing the power supply connections, emptying the oil tank and disposing the liquids by right way.

If the lift is to be left unused for a long period, proceed as follows:

1. Disconnect the energy source;
2. Empty the control unit tank.
3. Grease the moving parts which might be damaged by dust or drying out.

OVERALL DIAGRAM

Fig1-1.

Modil A →

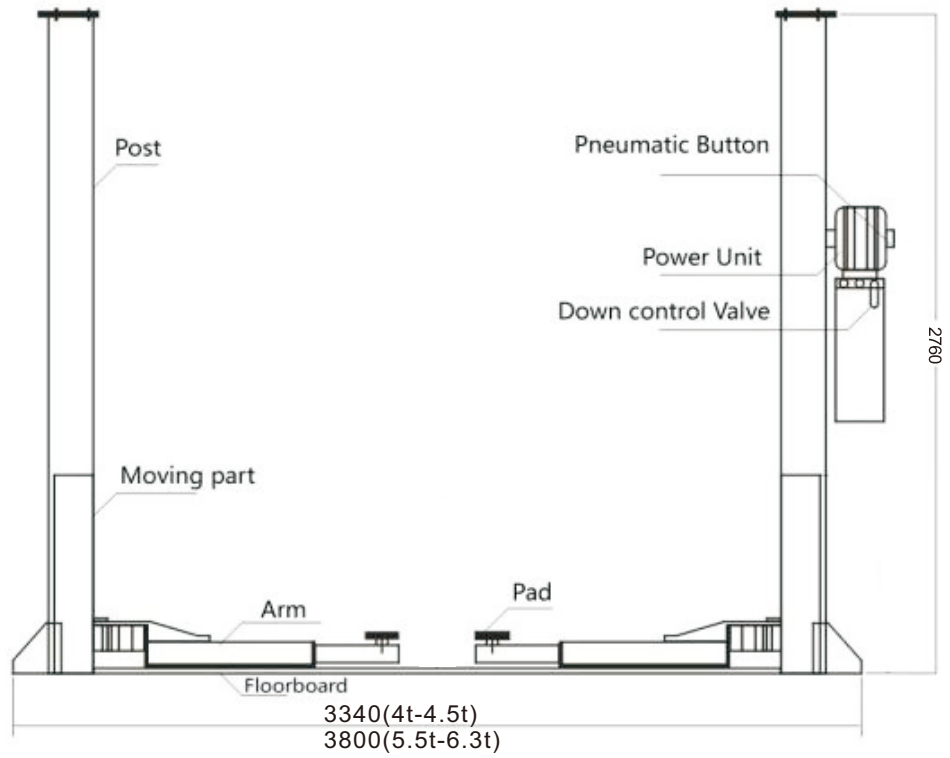
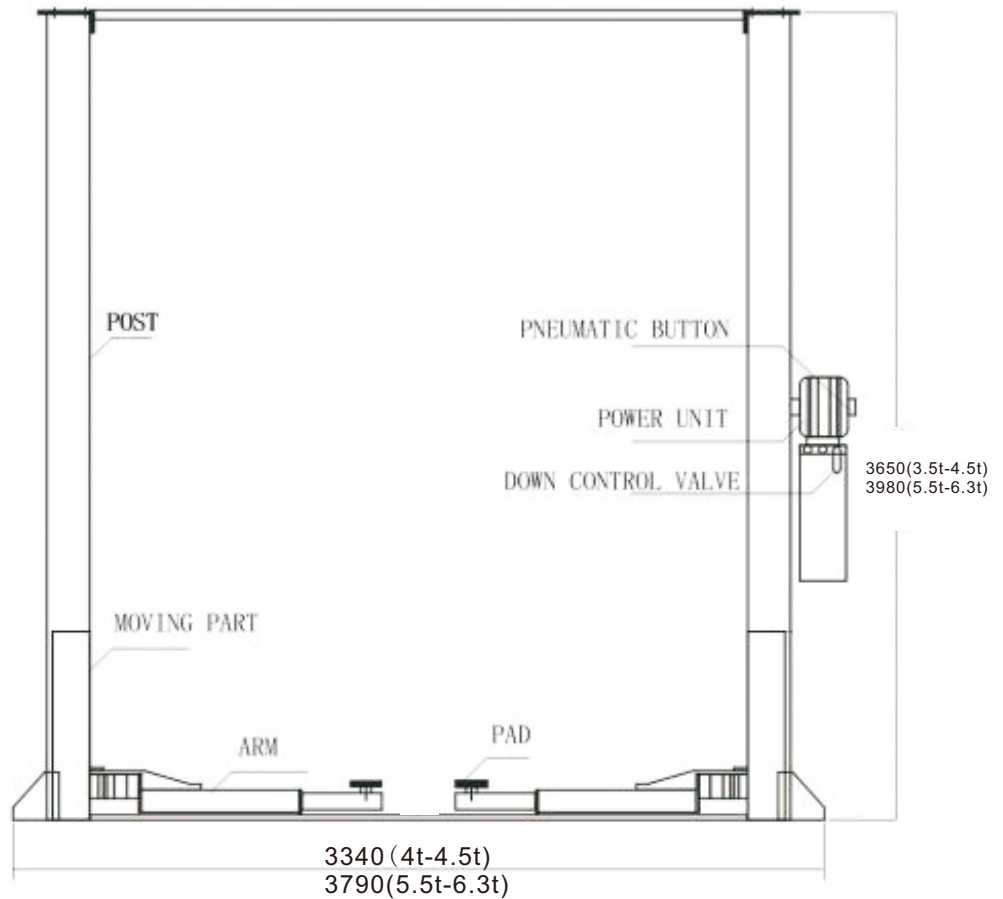


Fig1-2.

Modil B →



TRANSPORTATION

For transport and volume reasons

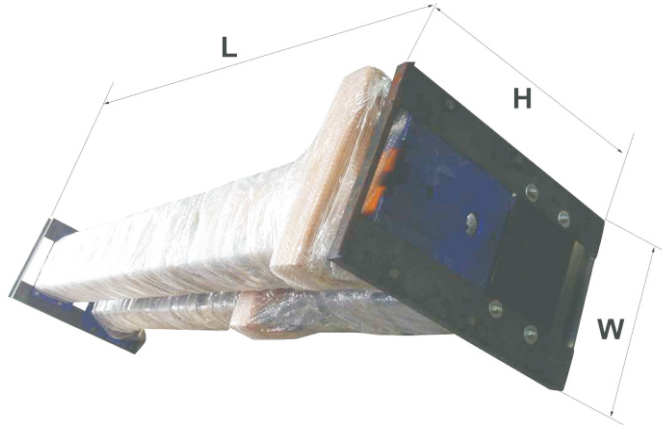
is packed into a

plywood case. It must be moved by suitable capacity forklift truck from the front end or middle of package.



Moving and positioning operation can be very dangerous if not performed with the utmost caution. Send bystanders away, clear and delimit the installation site; Check the integrity and suitability of the available means.

Fig2



L=2800mm(A)/3800mm(B)

W=450MM

H=710MM

The two columns are protected by bubble plastic paper then fixed by steel frame.

UNPACKING

Check that the equipment is in perfect condition, making sure that no parts damaged or missed.

Use fig. 1 for reference. If in doubt do not use the machine and contact your retailer.

- A: Column**
- B: Power unit**
- C: Carriage**
- D: Pipe protection**
- E: Arms**

Modil A

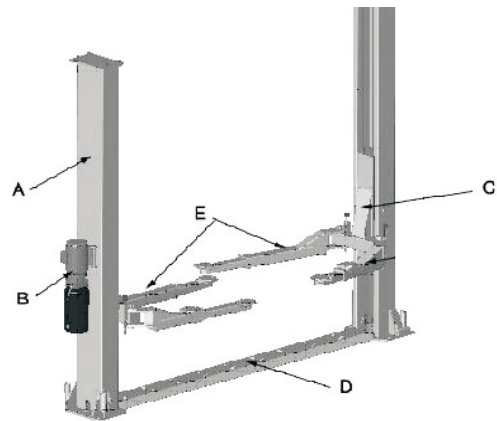


Fig 3.

Modil B

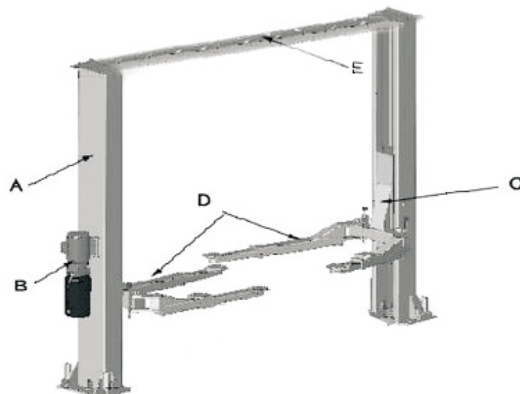


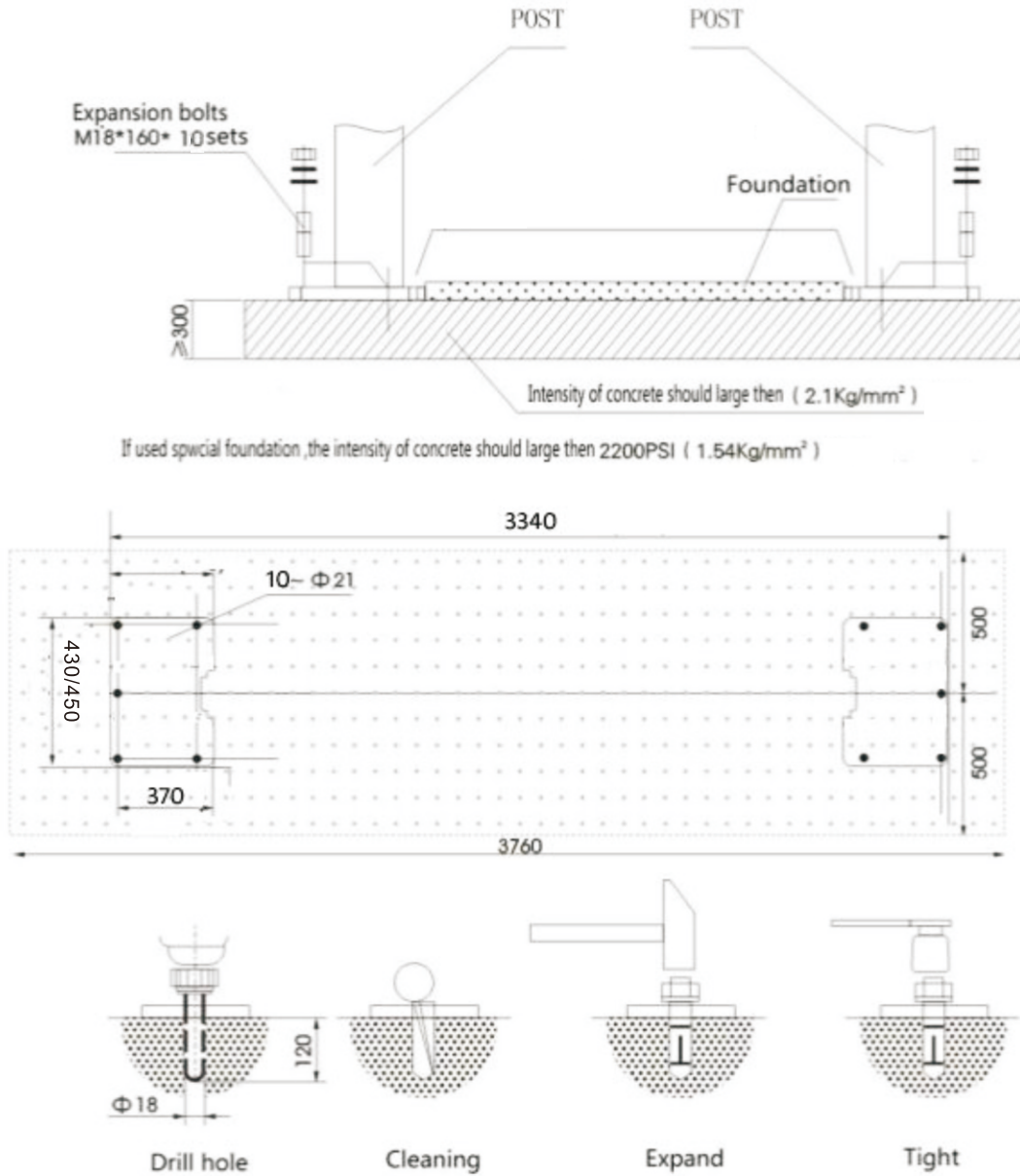
Fig 4.

INSTALLATION

SPACE REQUIRED

The lift must be installed on a level concrete floor, having minimum thickness of 20cm and an extension of at least 1.5m from anchoring points.

The lift installation concrete surface must be perfectly smooth.



Please refer to the actual tonnage size for specific size

Fig 5.

INSTALLATION STEPS:

STEP ONE: (determine location and marks with chalk on the floor.)

1. Determine which side will be the approach side and which side the power unit to be mounted.
 2. Once the location is selected, use a chalk line to layout a grid for the post locations and make an outline of the posts on the floor at each location.
 3. Before proceeding, double check measurements and make certain that the bases of each column are square and aligned with the chalk line.
-

STEP TWO: (Mounting two columns)

1. Drill each anchor hole in the concrete using a rotary hammer drill. To assure full holding power, do not ream the hole or allow drill to wobble.
 2. After drilling, remove dust thoroughly from each hole and make certain that the column remains aligned with the chalk line during this process.
 3. If shimming is required, insert the shims as necessary under the baseplate so that when the anchor bolts are tightened, the columns will be plumb.
 4. With the shims and anchor bolts in place, tighten by securing the nut to the base then turning 2 -3 full turns clockwise. DO NOT use an impact wrench for this procedure.
 5. Position the other column at the designated chalk locations and secure to the floor following the same procedures as outlined in step 1, 2, 3, 4.
-

STEP THREE: (Routing the Equalizer cables)

1. Raise and lock each carriage approximately 800mm high above the ground.
 2. Make sure that the safety locks on each column are fully engaged before attempting to route equalizer cables. Carriages must be equal height from the floor before proceeding.
 3. With the carriages in equal position from the floor, route the equalizer cables as shown below.
 4. After the equalizer cables have been routed, adjust each cable so that they are equal tension.
-

NOTE: The equalizer cables should be checked weekly for equal tension. Failure to do this will cause uneven lifting. The cables should always be adjusted so that they are equal tension when resting on the safety locks.

Fig6 Put up the pillars and lifting slide table to 400mm -500 mm high(two pillars is the same)



Fig7-1 Please install the wire



Fig7-2 The wire across the pillars back



Fig7-3 Correct position



Fig7-4 Wire rope up

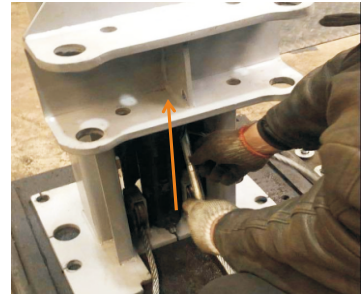


Fig7-5 Fix on the hole and screw up the screws , same installation of two side



Fig 8 Tubing installation (first time please don't tighten up of two side . not let it fall down)

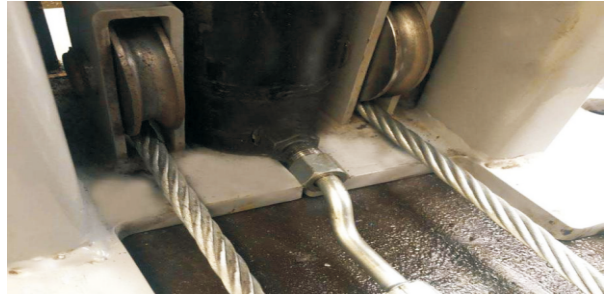


Fig9 Tubing cover installation , the cover it is 2640mm,let it fix Close to the base plate clamping slot

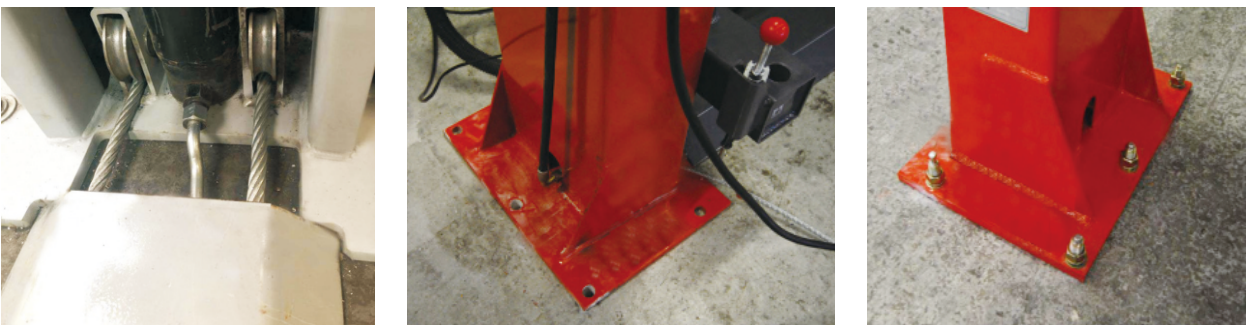


Fig 10-1 Arms installation (there is four arms, and every one have A,B,C,D, on the slide table also have A,B,C,D, please install it to same part)

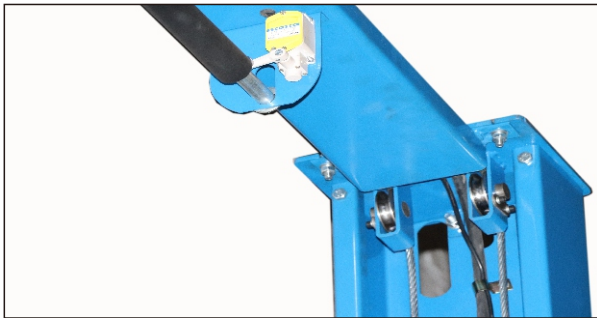


Fig 10-2 The slot notch is upward, the oil pipe and the electric wire pass through the slot, and are fixed with a fixing clip, The limit switch is installed on the fixed plate near the direction of the pump station.

Fig 10-2

Fig 10-3 After installation, please check the cylinder set, the hydraulic cylinder must be placed in the bottom hole. The bottom floor two post lift and gantry two post lift same.

Manual lock two post lift installation is over. next adjust the two ends of the wire rope after the two ends of the sliding platform lift speed should be the same. Please see the adjustment method in Figure 13



Fig 10-3

Automatic installation :
please fix the electromagnet.

Fig11-1 This line fix the nearby electromagnet

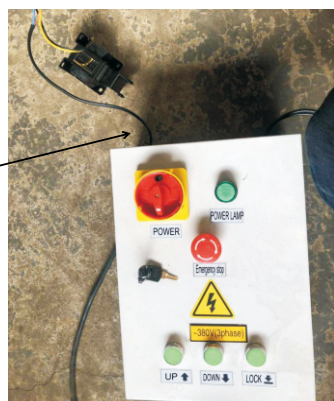


Fig11-2 This line fix the another electromagnet



Fig11-3 The line goes through here.

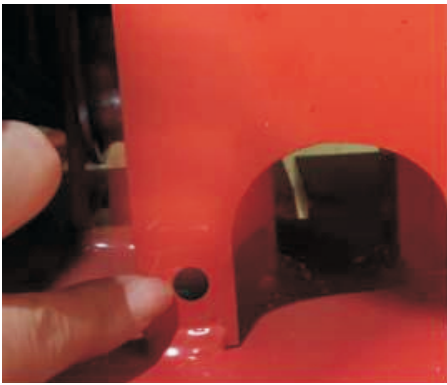


Fig 12 Join the the short tubing with the pump and hydurlic cylinder.

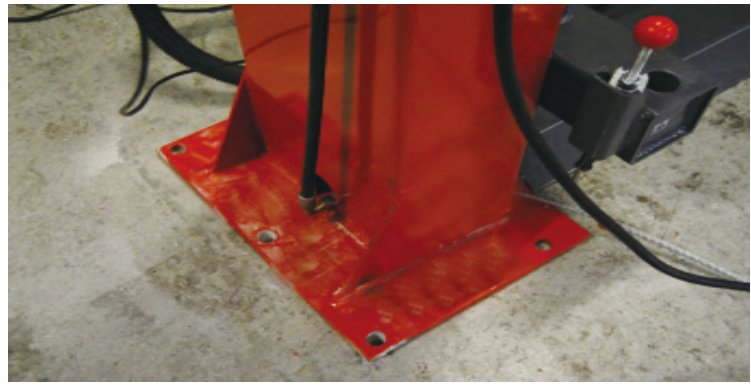
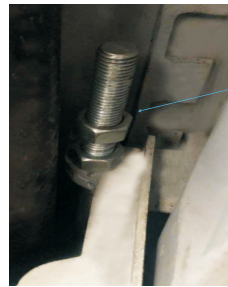


Fig13 Add 10L oil, and the adjustment slide table balance, let two slide table on the same height.The two steel ropes should have the same tightness, and they should be tight after adjustment. If the steel rope is loose, adjust the position of the screw on the opposite slide until it is tight.. At last ,two side table on the same height and four arms on the same height, error max. in 5mm.



Adjustment

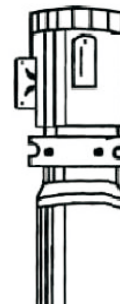
Fig14



STEP FOUR: (Mounting the power unit.)

Attach the power unit to the POWERSIDE COLUMN with supplied tools and parts. Fill the reservoir with hydraulic oil.

Make sure the funnel used to fill the power unit is clean
Summer and Winter you should change the oil



STEP FIVE: (Installing Hydraulic Lines.)

1. Install the hydraulic lines as shown right, paying careful attention to keep the hoses clean and free of debris.
2. clean and free of debris.

Modil A

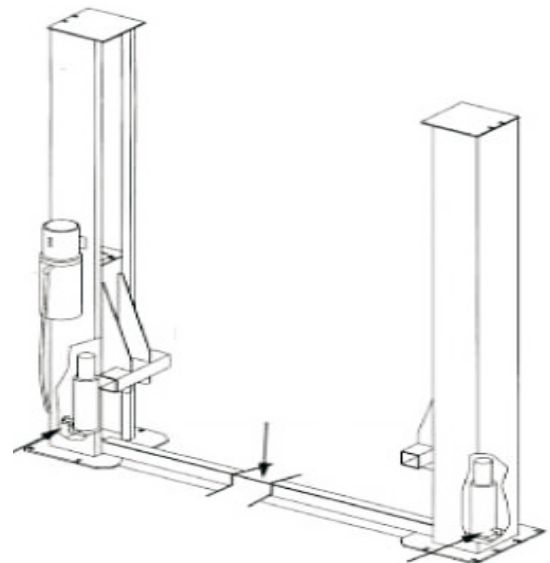
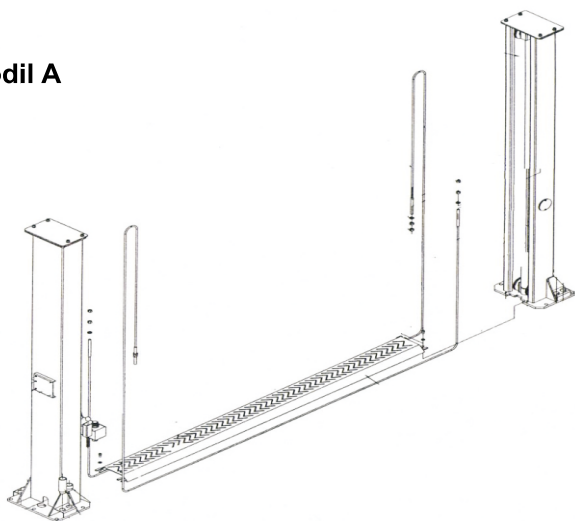
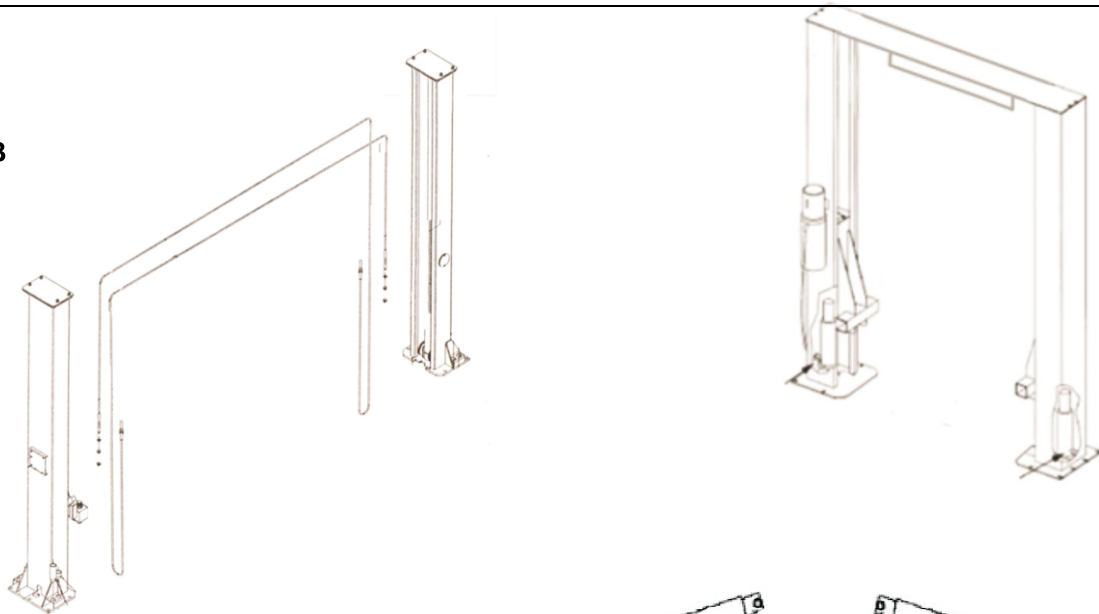


Fig15-1

Modil B



STEP SIX: (Lifting arms)

Install the arms as right picture showing.

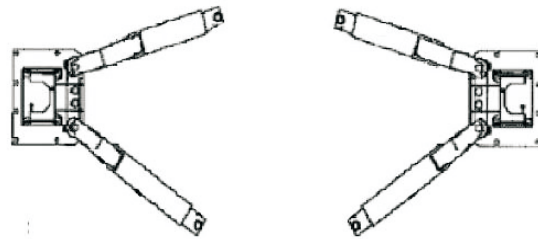


Fig16

INSTRUCTIONS FOR USE

Make sure that you have read the instruction manual then use this lift.

RAISING THE LIFT

1. Make sure that you have read the operation manual before operation.
2. Always lift the vehicle at the manufacturer recommended points.
3. Position the vehicle between columns.
4. Adjust the swing lift arms so that the vehicle is positioned with the center of gravity of midway between pads
5. Raise the lift by pressing the push button until the pads touch firmly the right points and recheck if the vehicle is secure.
6. Raise the lift to desired height by pushing push button.
7. Check the security of vehicle, then perform maintenance or repair work.

LOWERING THE LIFT

1. Pulling the wire rope of each column to release the safety lock before lowering.
2. Lowering the lift by press the oil drain handle.
3. Before driving away the vehicle, position the arms and clear all the obstacles.

MAINTENANCE

The several pieces of maintenance operations to carried out are described below. A low operating cost and a long life of the machine are from routine observation of there operations.

1. Check all chains/wire rope connections, bolts and pins to ensure proper mounting.
2. Lubricate columns with grease.
3. Check all anchors bolts regularly and re-tighten them if necessary.
4. Inspect cable tension, adjust it if needed.

BREAKDOWN VIEW

Modil A

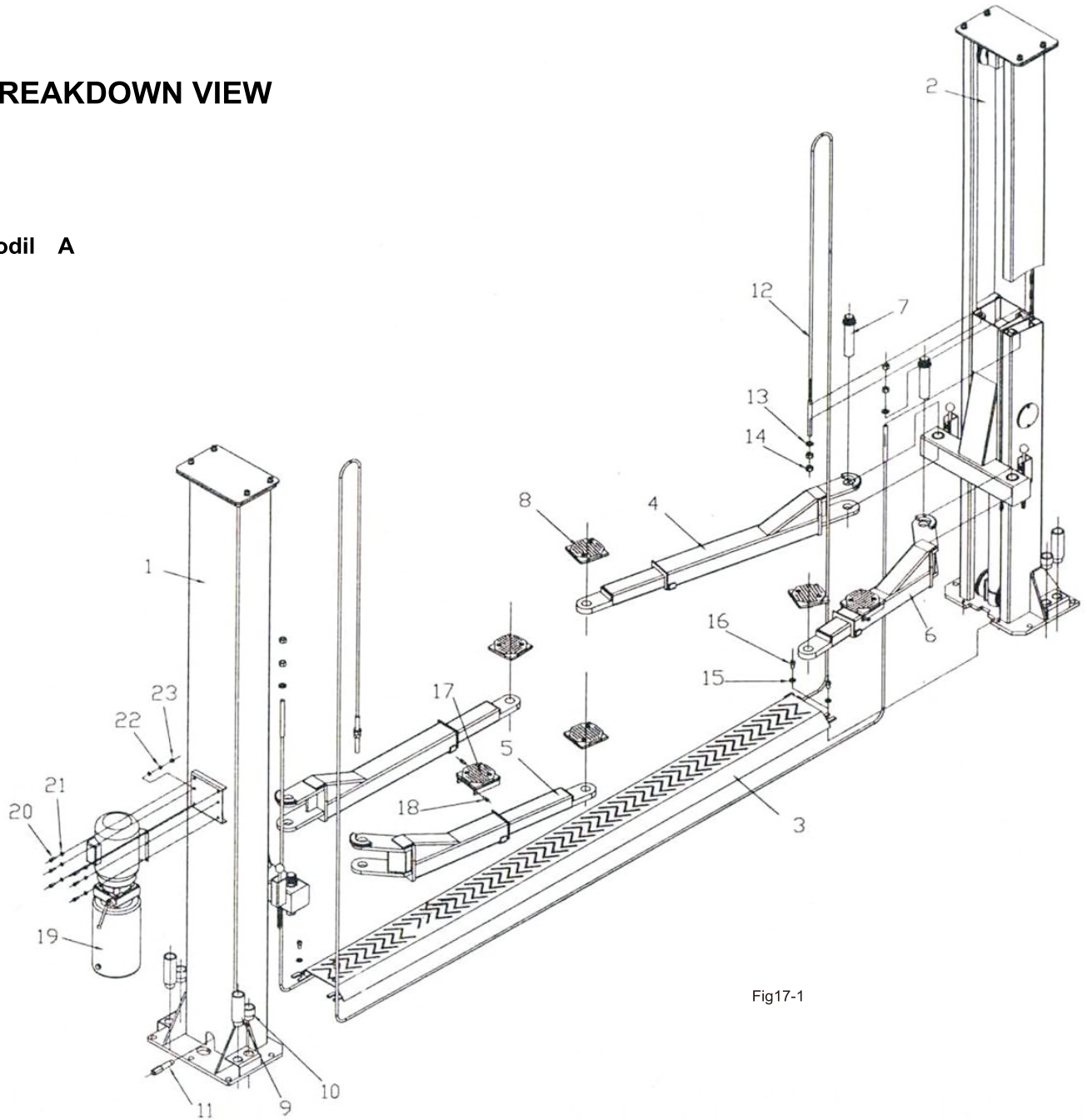


Fig17-1

1.	Post	13.	Nut
2.	Board	14.	Screw
3.	Long arm	15.	Pad
4.	Flexible arm	16.	Pad
5.	Short arm	17.	Serving tray
6.	Shaft	18.	Oil box
7.	Pad	19.	Eelectrical machinery
8.	Height extension post	20.	Bolt
9.	Height extension post	21.	Pump place
10.	Connector	22.	Screw
11.	Chain	23.	
12.	Pad	24.	

Modil B

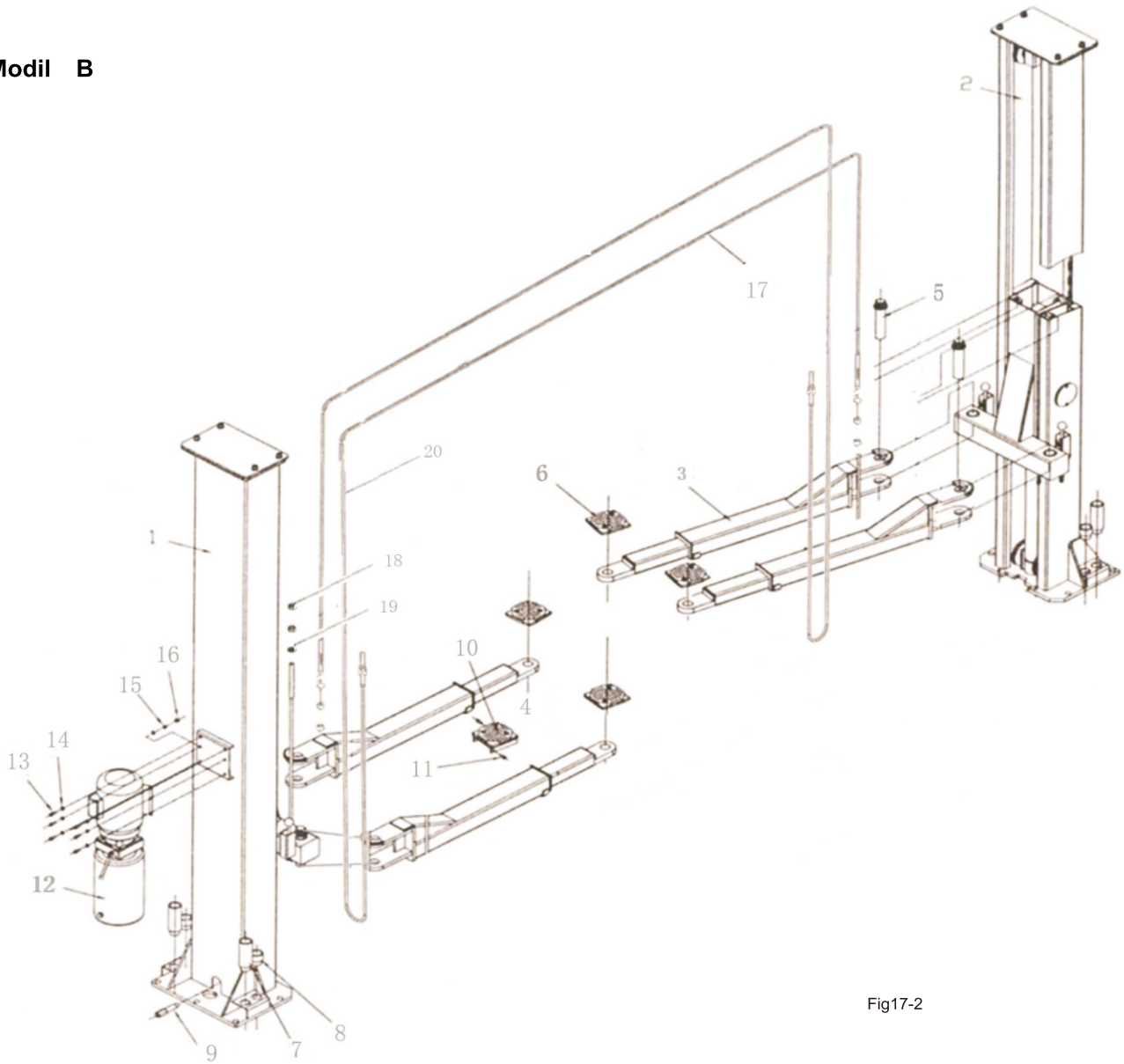


Fig17-2

1	post	13	Bolt
2	Wire wheel	14	Bolt
3	Arm	15	Bolt
4	flexible arm	16	Bolt
5	shaft	17	Wire
6	Pad	18	Nut
7	Add hight post	19	Screw
8	Add hight post	20	Wire
9	Connector	21	Control box
10	Pad	22	
11	Oil box	23	
12	Electrical machinery	24	

Electrical drawing

(1) 380V/400V-1PH

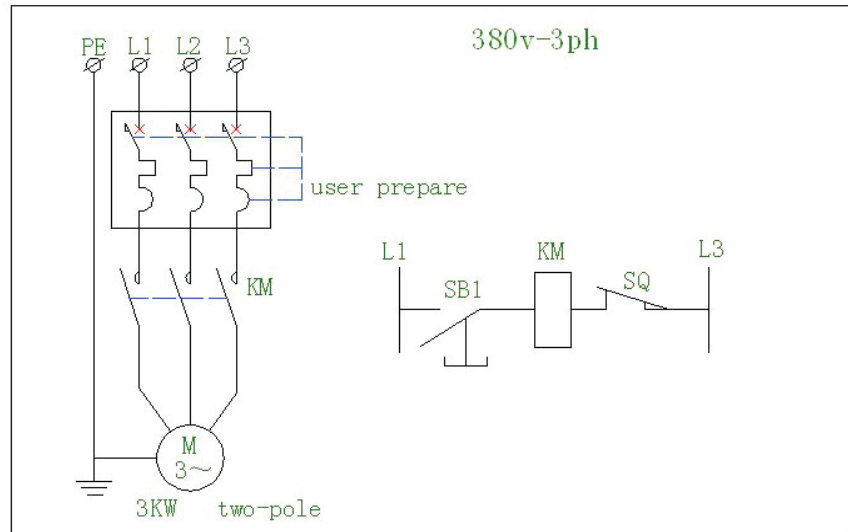


Fig18

(2) 220V/240V-1P

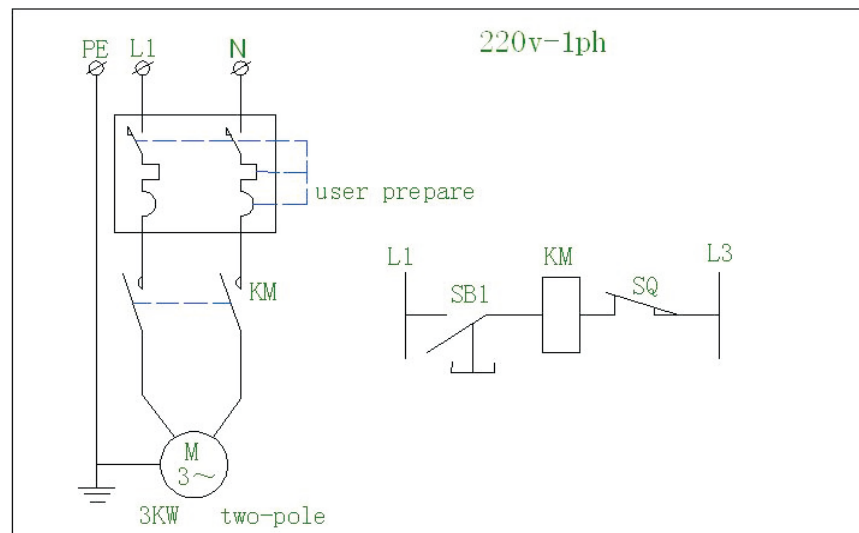


Fig19

.(3) 220V/240V-3PH

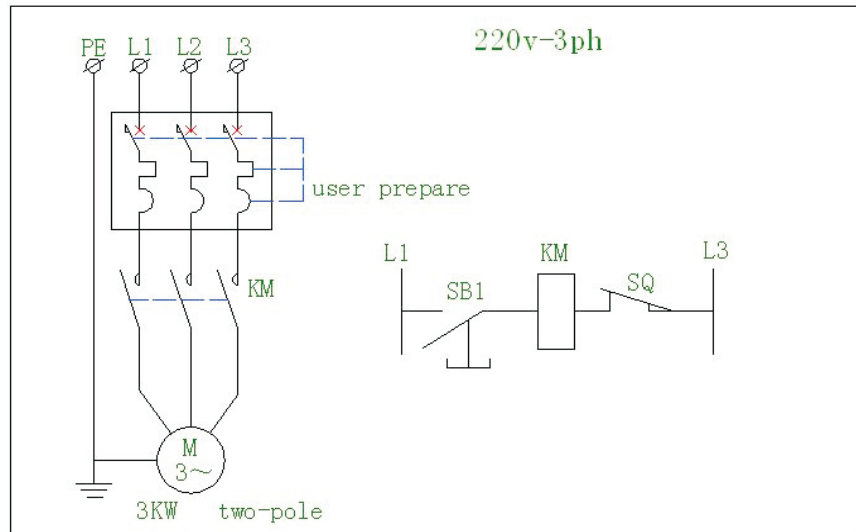


Fig20

Hydraulic drawing

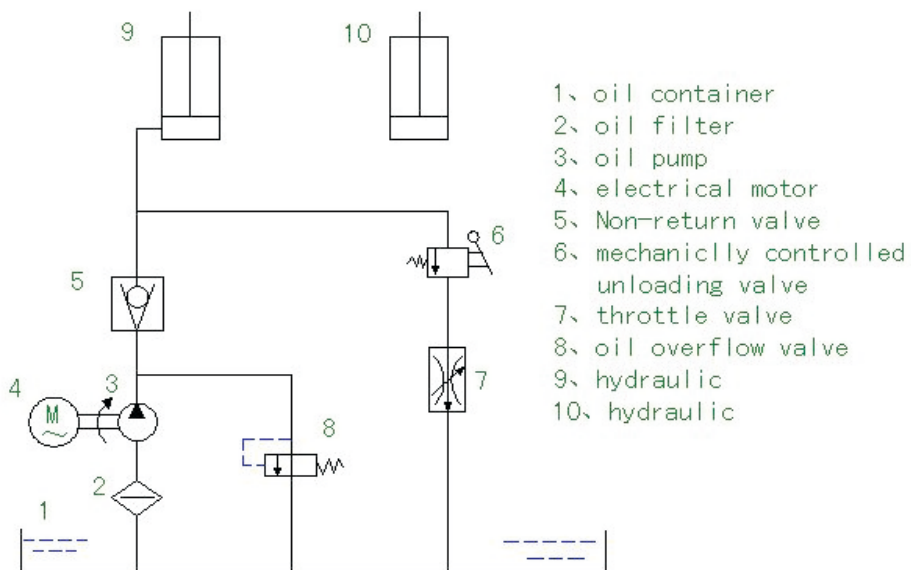
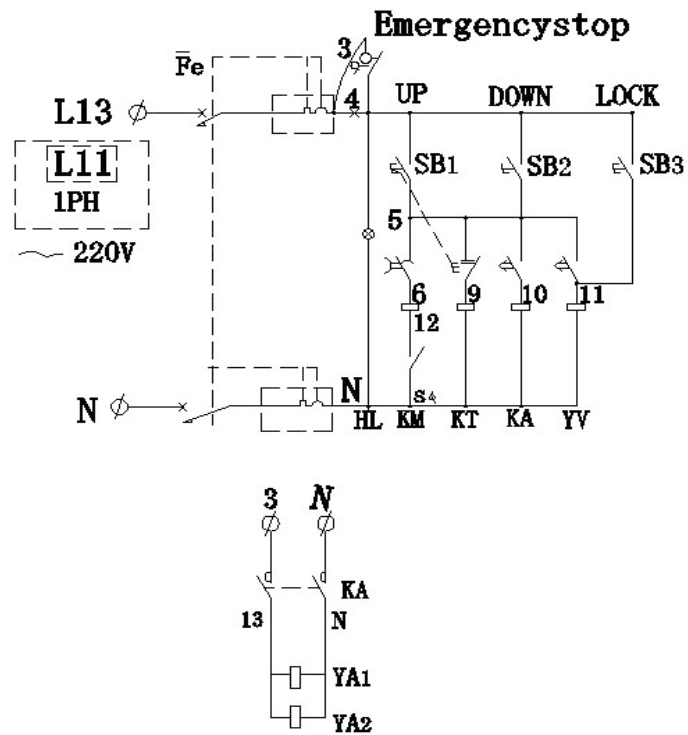
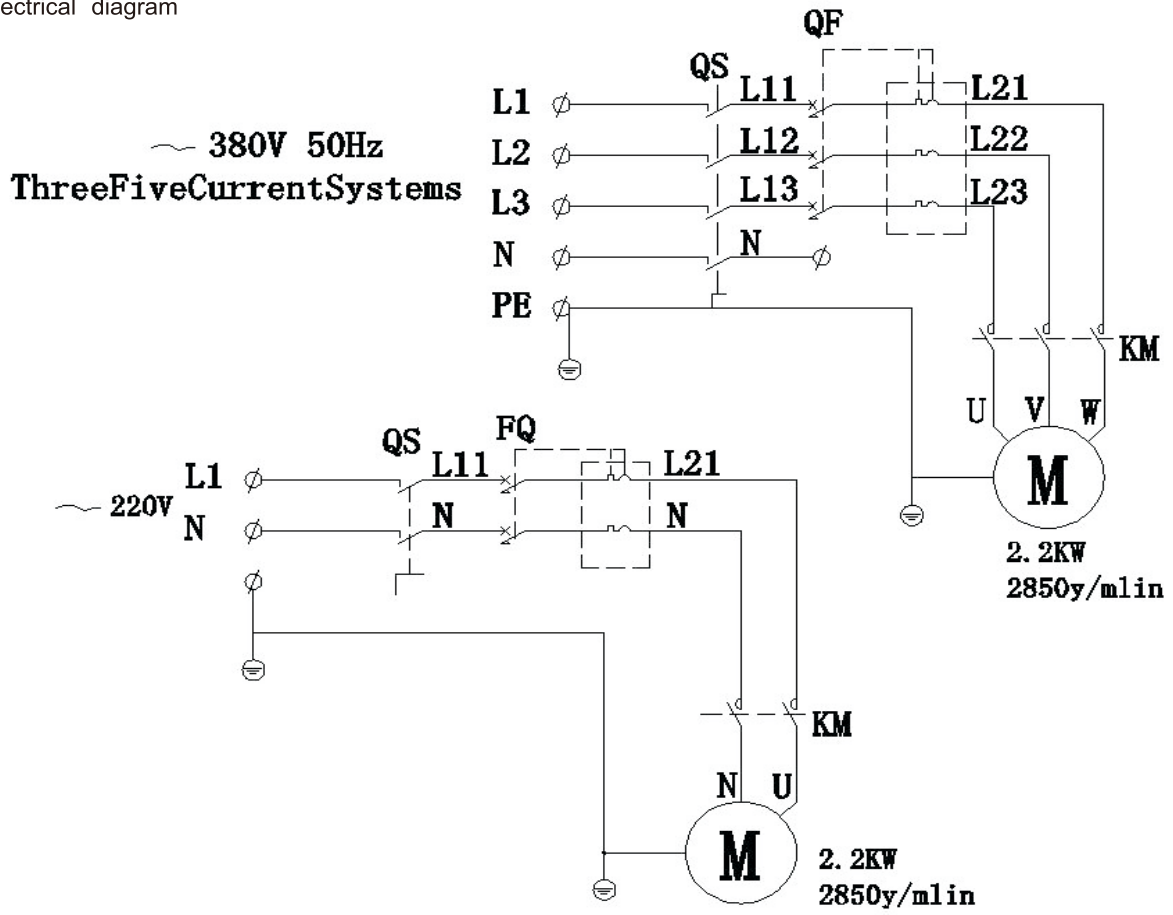


Fig21

Fig22 Electrical diagram



Troubleshooting

Trouble	Diagnosis	Remedy
Lift does not respond.	Main switch off.	Turn on main switch.
	Mains fuse defective.	Replace mains fuse.
Motor starts up, pressure build-up insufficient to raise load.	Lowering screw open.	Close lowering screw.
	Lowering valve permanently open.	Contact service.
	Hydraulic system leakage.	Remove leakage.
	Low fluid level.	Check fluid level, add fluid as required.
	Load on lift too heavy.	Reduce load, observe rated load capacity.
Level difference between carriages too big.	Equalizing cables maladjusted.	Contact service.
Lift cannot be lowered.	Latch release defective.	Contact service.