

## **Ride on Road Sweeper User's Manual**



**← Please make sure that you have read the instruction carefully  
and fully understood it before using.**

**← Please keep this instruction properly.**

# **Catalog**

**1.0 Machine Appearance**

**2.0 Technical Parameters**

**3.0 Operation Instructions**

**4.0 Maintenance and Replacement of Wearing Parts**

**5.0 Matters Needing Attention**

**6.0 Common Fault and Solutions**



Our company specializes in the production of electric driving sweeper, which introduces foreign advanced technology and adopts maintenance free type Power supply, integrated with suction and sweeping, has strong cleaning ability, no pollution and noise, convenient operation, long continuous operation time, convenient maintenance and absolute value for money. It can be applied to streets, factories, workshops, property communities, campus squares, etc.

## 1.0 Machine Appearance



1. Steering wheel and operation panel
3. Warn light
5. Garbage Bin
7. Wheel
9. Side Brush

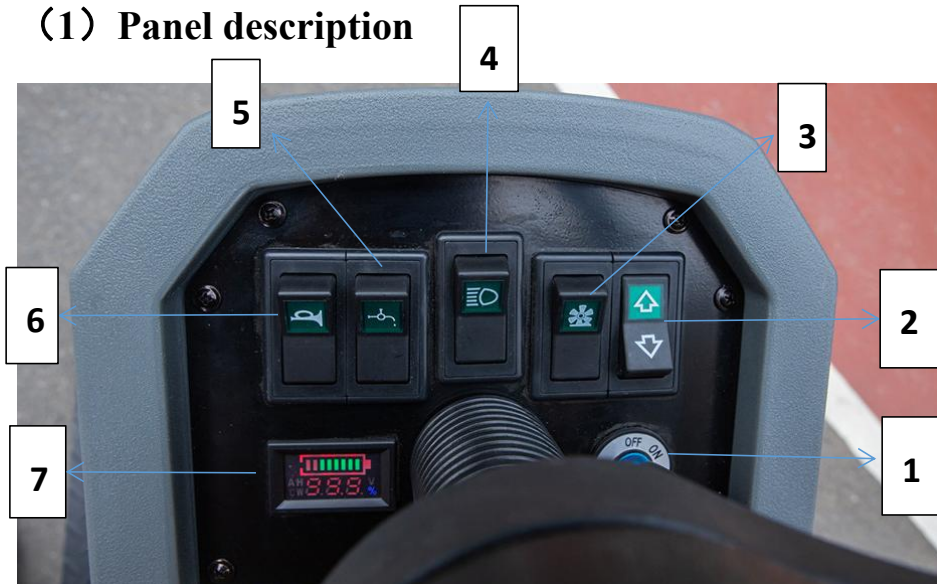
2. Lamp
4. Seat
6. Control pedal
8. Rolling Brush  
(Main Brush)

## 2.0 Technical Parameters

<b>Max Work Productivity</b>	<b>6400 m<sup>2</sup>/h</b>
<b>Sweeping Width</b>	<b>1250mm</b>
<b>Rolling Brush Diameter</b>	<b>500mm</b>
<b>Side Brush Diameter</b>	<b>500mm*2</b>
<b>Driving Motor</b>	<b>800W</b>
<b>Side Brush Motor</b>	<b>2*90W</b>
<b>Roller Brush Motor</b>	<b>700W</b>
<b>Suction Motor</b>	<b>145W</b>
<b>Operation Duration</b>	<b>&gt;3.5h</b>
<b>Forward Speed</b>	<b>0-10km/h</b>
<b>Trash Tank Capacity</b>	<b>80L</b>
<b>Water Tank Capacity</b>	<b>10L</b>
<b>Dimensions</b>	<b>1500*1250*1300mm</b>
<b>Net Weight</b>	<b>390kg</b>

### 3.0 Operation Instructions

#### (1) Panel description



**1. Power switch (Power off/ on)**

**2. Forward / backward switch**

**3. Sweeping**

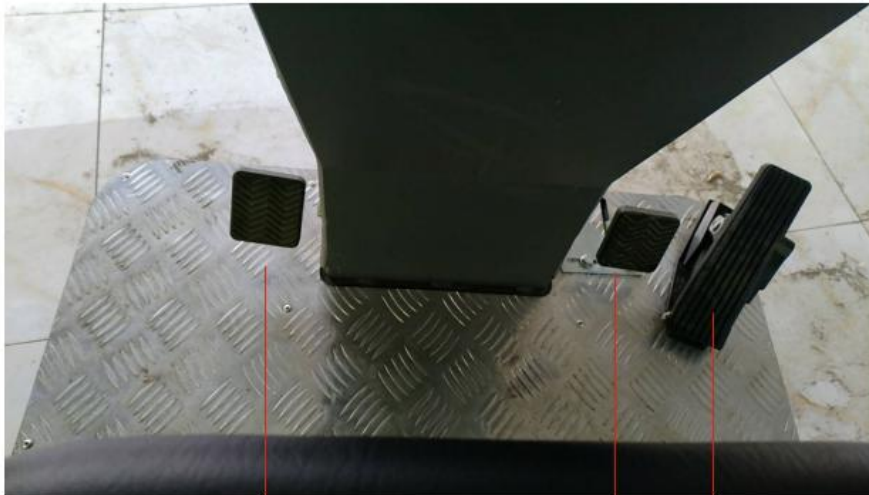
**4. Lamp**

**5. Sprinkler**

**6. Horn**

**7. Voltage and power display**

#### (2) Mudguard, Accelerator, Brake pedal, Vibrate dust handle



1

2

3

**1. Mudguard pedal (When the machine encounters a ridge or a large obstacle during driving, step on the lift pedal)**

**2. Brake pedal**

**3. Accelerator pedal**



4

**4. Vibrate dust handle ( After using the machine, please shake the handle to vibrate the dust from the filter)**

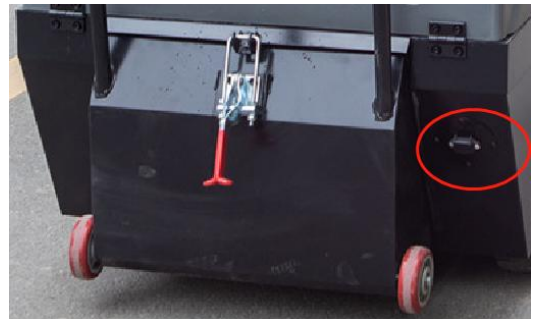
**(3) Removal and installation of dustbin**

If it is necessary to clean the garbage, first pull upward the garbage buckle, then pull the handle of the garbage tank backward to separate the garbage tank from the machine. After dumping the garbage, align the garbage can mouth with the correct position of the sweeper, slowly push forward the garbage tank to end, finally, fasten the buckle down.



### **(3) Charger**

The charging socket is located on the right rear side of the machine. After finishing the operation, just insert the charger socket into the charging input socket of the sweeper as shown in the picture.



## **4.0 Maintenance and Replacement of Wearing Parts**

### **(1) Rolling brush replacement**



- |  |  |
|--|--|
| <b>1</b> Rolling brush                                 | <b>2</b> Fixing nuts for rolling brush edge baffle |
| <b>3</b> Rolling brush edge baffle                     | <b>4</b> Rolling brush connecting plate            |
| <b>5</b> Fixing nut for rolling brush connecting plate |  |

**When the rolling brush needs to be replaced or cleaned, open the left door, screw off the bakelite fixing nut of the connecting plate of the rolling brush and drag out the connecting plate; then screw off the two bakelite fixing nuts of the roller brush side baffle and remove the roller brush side baffle to pull out the main brush. After replacement or cleaning, install the roller brush in reverse order.**

## **(2) Side brush replacement**

**To replace the side brush, firstly, put down the lifting rod of the side brush, unscrew the three bakelite nuts that fix the side brush, then remove the side brush. After replacing the brush, screw on three bakelite nuts to fix the side brush.**





## **5.0 Matters Needing Attention**



- 1. It is strictly forbidden for non professionals to operate the sweeper.**
- 2. It is strictly forbidden to clean the filaments.**
- 3. It is strictly forbidden to discharge the ribbon.**
- 4. It is strictly forbidden to park the car on the slope.**
- 5. After using the machine, please cut off the power in time.**
- 6. It is strictly forbidden to use the sweeper in rainy days.**
- 7. It is strictly forbidden to use the sweeper in case of power loss. If voltage is lower than 18.5v. Please charge it in time.**

## **6.0 Common Fault and Solutions**

**(1) The brake is not working**

**Adjust the wire rope nuts in the rear tires on both sides clockwise until the brake effect is the same on both sides.**

**(2) Not Walking**

**The related components are controller (left inside the distribution**

**box), fuse (the second from top to bottom), two-way contactor (below the fuse), accelerator (where the right foot is stepped on), driving wheel (front wheel), battery, corresponding wiring segment, connector and clue. If any of the components is damaged or the contact is not good, it will not walk. Replace the damaged components to recover.**

### **(3) Not Sweeping**

**There are 2 brush motors, 1 rolling brush motor, 1 fan, 1 100A contactor (in the middle of the right side of the distribution box), travel switch (located on the right side of the body, inside the rolling brush connecting plate, fixed on the right side plate), push rods, wire ropes, control switch buttons and so on. Among them, the stroke switch is damaged or not adjusted in place, the roller brush push rod is damaged, the wire rope is broken, and the control switch button is burnt, which will cause failure to clean. Side brush motor, rolling brush motor and fan motor are all controlled by 100A contractor. If any of them do not work, it is motor fault, the reasons are below:**

- ① The sweeping switch button fails. Replace the switch.**
- ② If the sweeping travel switch fails, adjust the wire rope of the main brush to make the travel switch work; if the travel switch is damaged, replace it.**
- ③ If 100A contactor is damaged, replace it.**

### **(4) No sprinkling**

**The sprinkler function mainly relates to components, water tank, water pump, water pipe, valve, nozzle, relay, switch and control circuit. Common problems include water tank leakage, water pipe rupture, loose ligation, water nozzle blockage, water pump damage, electrical circuit failure, etc. If any joint is found to have water leakage, loosen its connection section, then wrap the raw material belt and fix it tightly.**

**(5) No vibrating dust**

**Check whether the dust vibrating motor is damaged and whether the dust vibrating chain is loose or broken. If it is damaged, replace it.**

**Check whether the relevant circuit and switch button are normal. If they are damaged, replace them.**

**(6) No Charge**

**Check whether the charger connector is connected normally, whether the charger works normally, and whether the display on the charger panel is displayed according to the instructions. If the connector is not plugged in, just plug it in. In case of any other abnormality, such as fuse blowing and charger not showing, please contact after-sales service personnel in time.**

**(7) Ash leakage**

**The common causes of ash leakage are:**

- ① air filter fails to vibrate dust in time, resulting in blockage
- ② the sealant strip of the garbage can falls off or is partially damaged
- ③ the fan does not work normally
- ④ damage of front baffle
- ⑤ the main brush has filament ribbon winding or the installation direction is wrong
- ⑥ the buckle of garbage can is loose or falling off
- ⑦ if the cleaning speed is too fast.

**please take corresponding measures according to each situation.**

**(8) The rolling brush and side brush cannot be lifted**

**Three push rods are used to control the lifting of the main brush and the variable brush, which work separately and jointly. If one or two of them are found to be inoperative, the push rod shall be judged to be damaged and replaced; if three of them are found to be inoperative at the same time. Check the circuit. It can be judged that the button is damaged. Replace it.**

**(9) Steering wheel not working**

**The main causes of steering wheel failure are:**

- ① If the chain above the front wheel is loose or broken, replace the chain in time.
- ② The connecting spline of the steering wheel is loose. Tighten the locking screw of the spline. The spline is located above the disc, and the bottom of the steering wheel.